

## ISO 80369-7-Figure C.4

### Male Reference Luer Lock Connector For Testing Female Luer Connectors

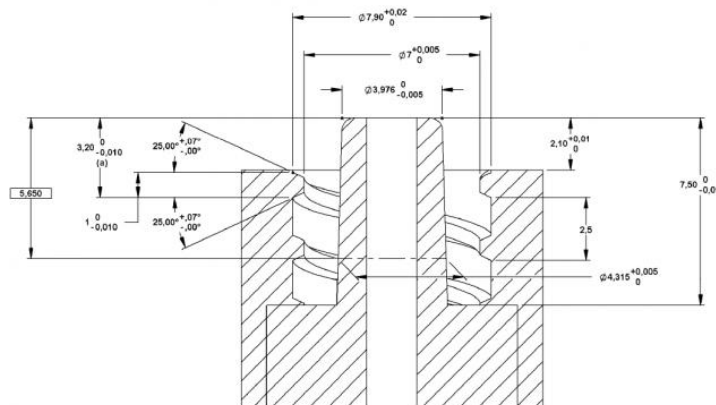


#### Detail Information:

Place Of Origin	China	Brand Name	Kingpo
Certification	ISO 17025 Calibration Certificate	Model Number	ISO 80369-7-Figure C.4
Standard	ISO 80369-7-Figure C.4	Material	Hardness Steel
Hardness	HRC58-62		

#### Product Description:

ISO 80369-7: 2017 Small-bore connectors for liquids and gases in healthcare applications -  
Part 7: Connectors for intravascular or hypodermic applications



a. Maximum distance from tip of male luer lock connector to the first complete profile of the internal thread (see Table B.3, dimension t).

b. Double-start, right-hand thread of 2,5 mm pitch.

NOTE : R may be 0,5 mm (maximum)  $\times$  45° chamfer.

This ISO 80369-7 Figure C.4 Male Reference Luer Lock Connector is a high-precision tool specifically designed for testing the performance of female luer connectors. Fully compliant with ISO 80369-7 standard requirements for evaluating connector leakage, separation resistance, stress cracking, and non-interconnectable characteristics.

#### Key Features:

- Precisely conforms to ISO 80369-7 Figure C.4 standard - Ensures comparability and reliability of test results
- High-quality material - Made of medical-grade materials, corrosion-resistant and wear-resistant
- Multi-functional testing capability - Can simultaneously test leakage, separation, stress cracking and non-interconnectable characteristics
- Precision machining - Strict tolerance control ensures test accuracy

#### FAQ

- What is the main purpose of this ISO 80369-7 Figure C.4 male reference connector?

A: Mainly used to test the leakage performance, separation resistance, stress cracking tendency and non-interconnectable characteristics with non-standard connectors of female luer connectors.

- How to ensure the connector complies with ISO 80369-7 standard?

A: Each connector comes with detailed calibration certificate and statement of compliance, proving that its dimensions and performance fully meet the requirements of ISO 80369-7 Figure C.4.

- Is custom service available to meet special testing needs?

A: We can provide customized test connector solutions according to customers' special needs, but the standard product already covers all test requirements of ISO 80369-7.